

The Life Cycle of a San Diego Tire



Overview

Tire Life Cycle

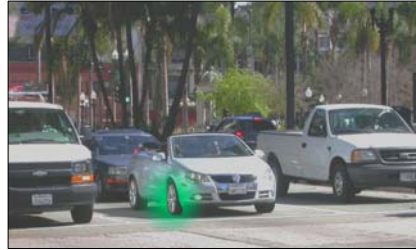
Supporting Data

Collaboration with Mexico

Problems/Solutions



Tire Life Cycle

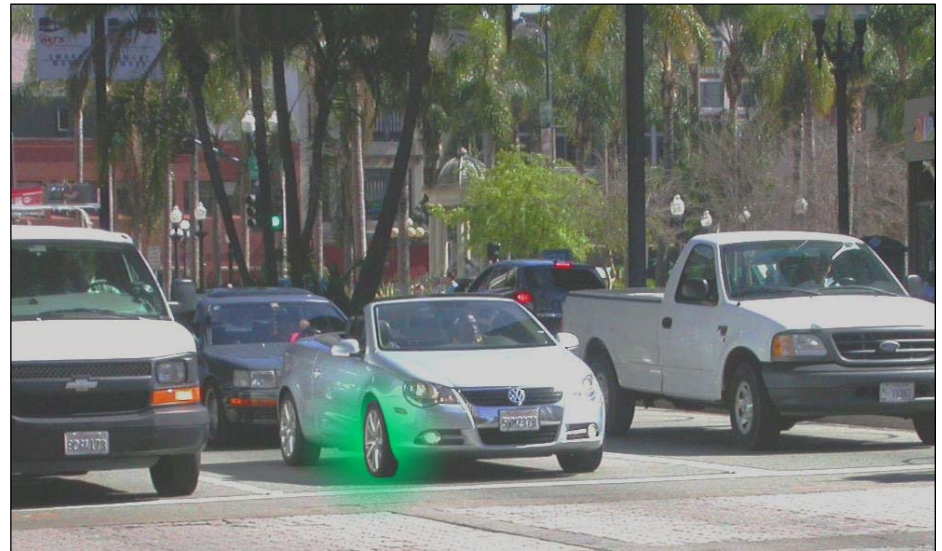


Follow the Green Tire

1.

**Purchase of new tire in the
City of San Diego**

\$1.75 Tire Fee Collected

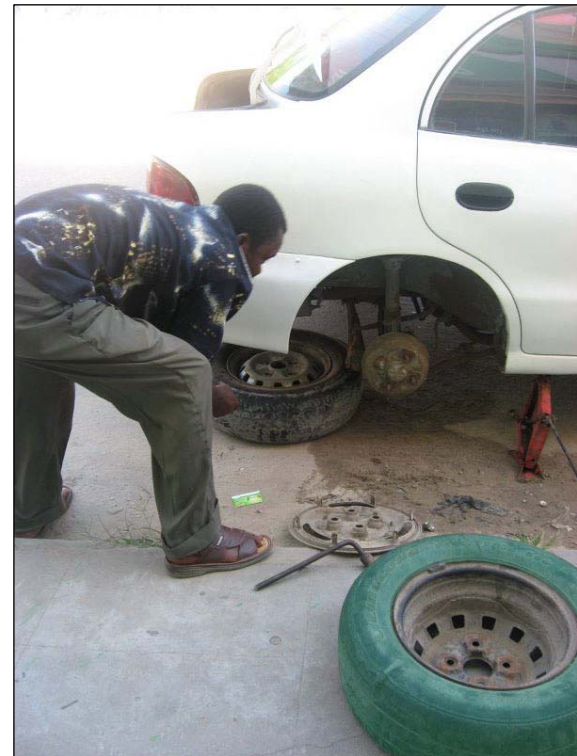


Follow the Green Tire

2.

Tire is replaced

Disposal Fee Collected



Follow the Green Tire

3.

Tire travels about 100 miles north to LA County

341,000 tires into San Diego landfills in 2005



Follow the Green Tire

4.

Tires are sorted for:

Disposal

Recycling

Re-use



Follow the Green Tire

5.

Tire travels about 100 miles south to Tijuana



Follow the Green Tire

6.

Tire is sold in Tijuana



Follow the Green Tire

7.

Tire is worn out and abandoned in the watershed



Follow the Green Tire

8.

Tire washes downstream back to the City of San Diego into a sensitive habitat



Follow the Green Tire

9.

Tire is removed from estuary using State and Local funds



Follow the Green Tire

10.

Tire is discarded in landfill



An Unsustainable Cycle

**798,000 used tires went into Mexico
using CTLs from California in 2007**

**Additional thousands of
undocumented tires**



Legal Loophole

Auto dismantler zone on the border

CTLs not required for transport of 9 or fewer tires by unregistered hauler

Illegal disposal is profitable

Generators unknowingly supply illegal haulers



California Motivation

Interagency coordination to find solutions

La Paz agreement gives framework

Border 2012 Binational Waste Policy Forum

“improve institutional and infrastructure capacity for waste management and pollution prevention”



California Motivation

Senate Bill 772

“include as a program element of its five-year plan for tires, **border region** activities conducted in coordination with California EPA. Such activities would include: training programs, environmental education, waste tire abatement, tracking tire flow across the border, and coordination with regard to environmental and control requirements.”



Funding for Mexico

Problem

Accumulating waste tires
Lack of Infrastructure

Possible Solution

Money from CIWMB Waste Tire Fund



Exporting Waste Tires

Problem

Substandard tires are exported to Mexico both legally and illegally

Possible Solution

Tires that are inadequate for further reuse need to be rendered unusable



Regional Recycling

Problem

Insufficient recycling options for the Border

Possible Solution

Recycling center funded with a public-private partnership



A Greener Tire

Christina Buchanan

**City of San Diego Solid Waste Local
Enforcement Agency**

cbbuchanan@sandiego.gov

619-533-3693



zero waste
CALIFORNIA
INTEGRATED WASTE MANAGEMENT BOARD

